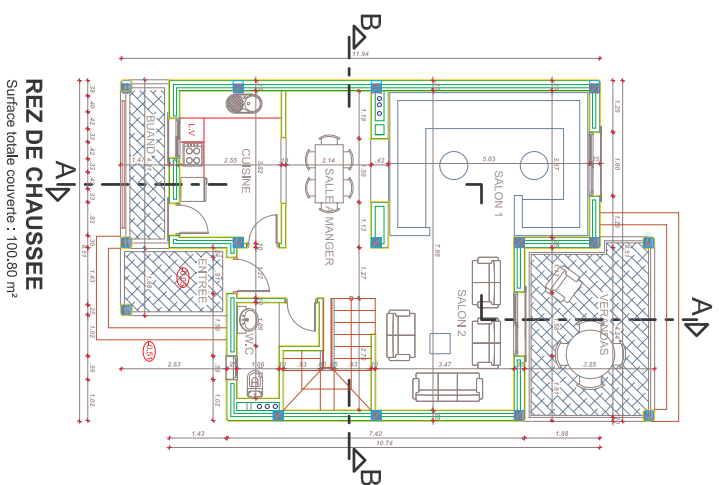
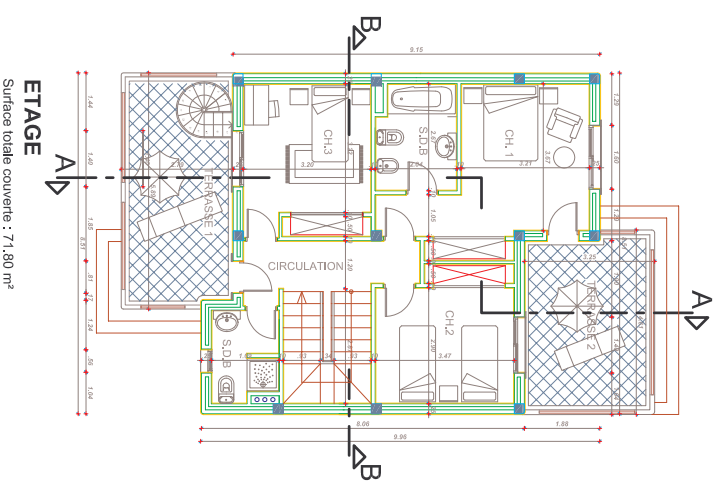


# PLAN VILLA

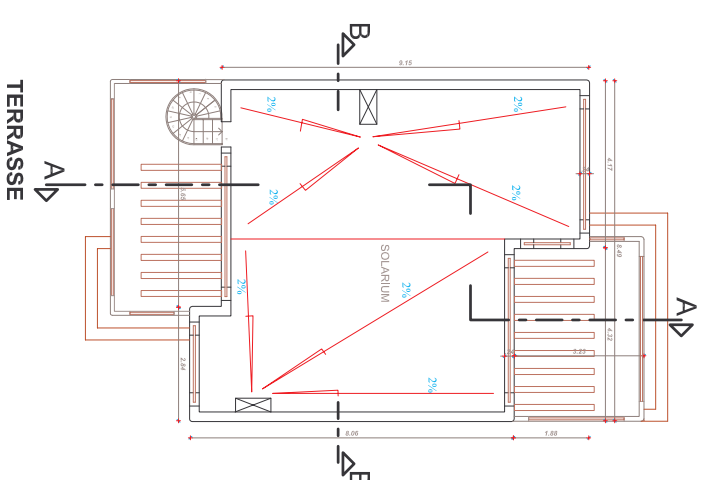
Projet de construction et d'aménagement  
Des Terrains T.F 31 874/19, T.F 31 603/19 et T.F 11 269/19, PREFECTURE MIDIQ - FNIDEQ, WILAYA DE TETOUAN



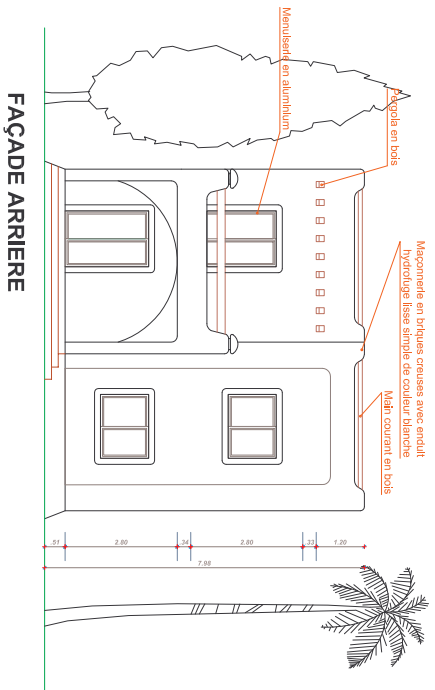
**REZ DE CHAUSSEE**  
Surface totale couverte : 100,80 m<sup>2</sup>



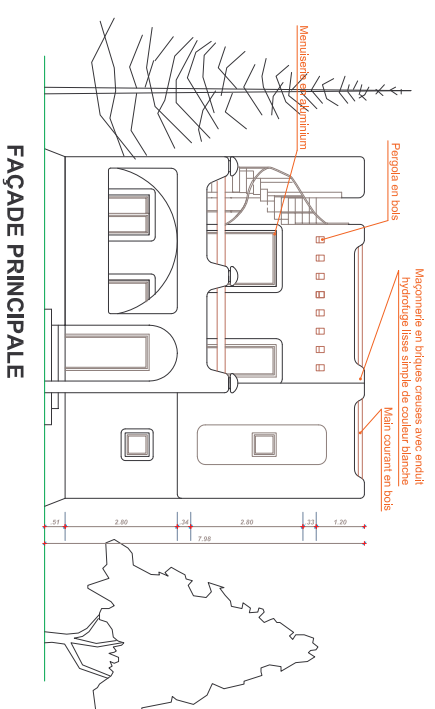
**ETAGE**  
Surface totale couverte : 71,80 m<sup>2</sup>



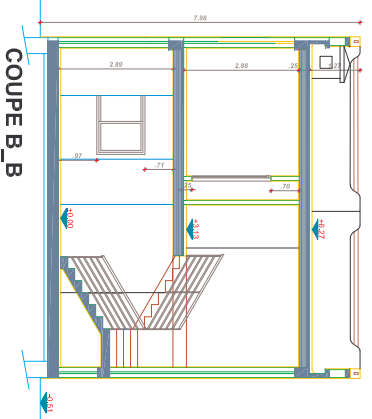
**TERRASSE**



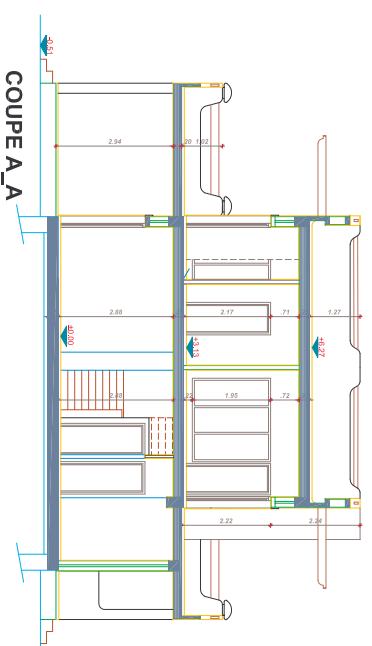
**FAÇADE ARRIERE**



**FAÇADE PRINCIPALE**



**COUPE B\_B**



**COUPE A\_A**

