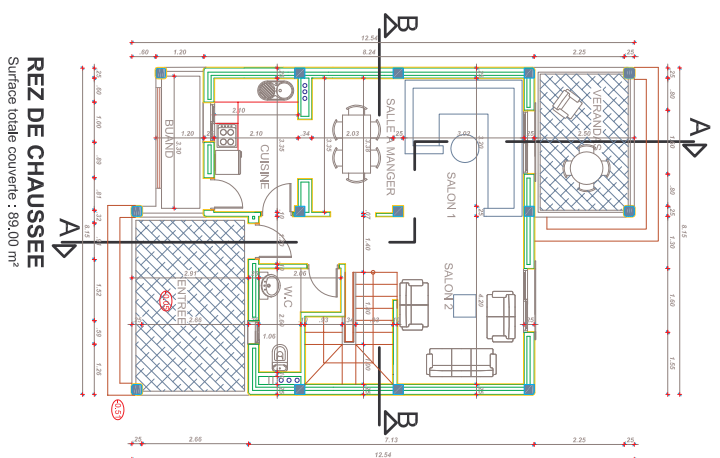
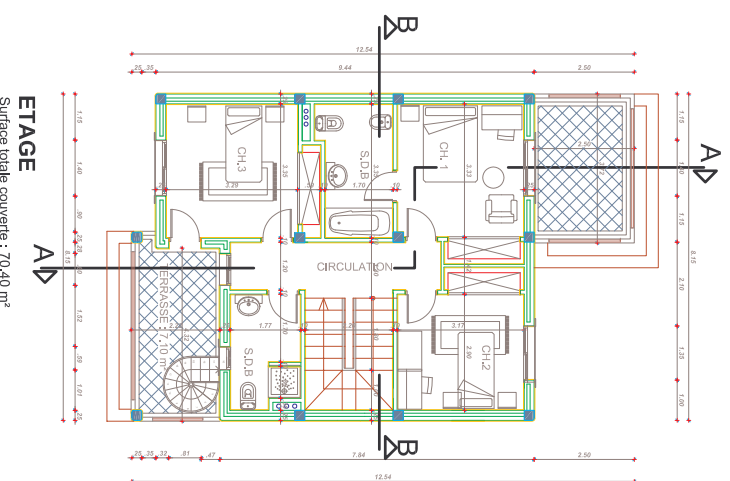


PLAN VILLA

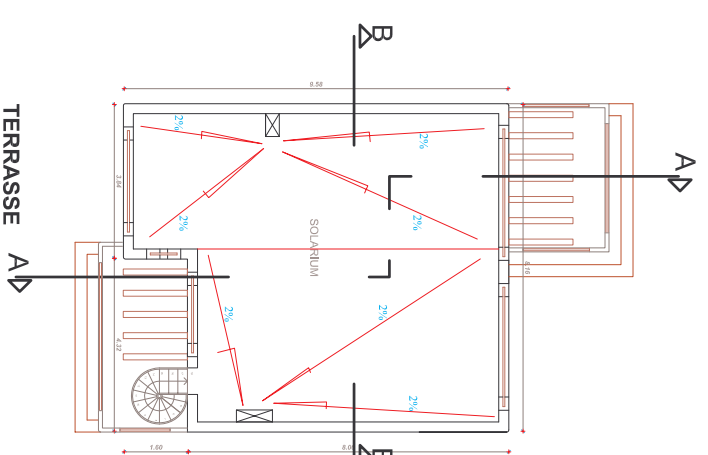
Projet de construction et d'aménagement
Des Terrains T.F 31 874/19, T.F 31 603/19 et T.F 11 269/19, PREFECTURE MIDIQ - FNIDEQ, WILAYA DE TETOUAN



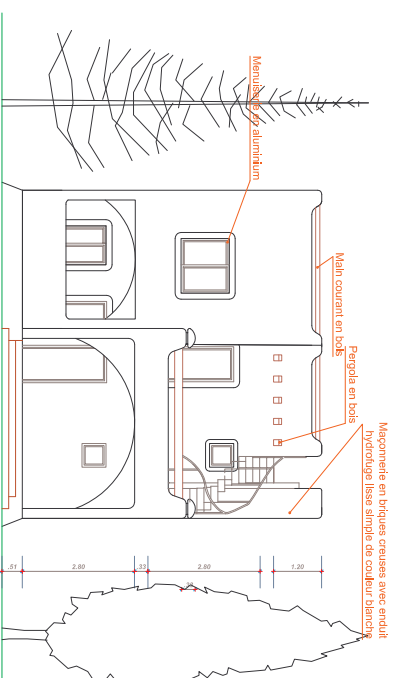
REZ DE CHAUSSEE
Surface totale couverte : 88,00 m²



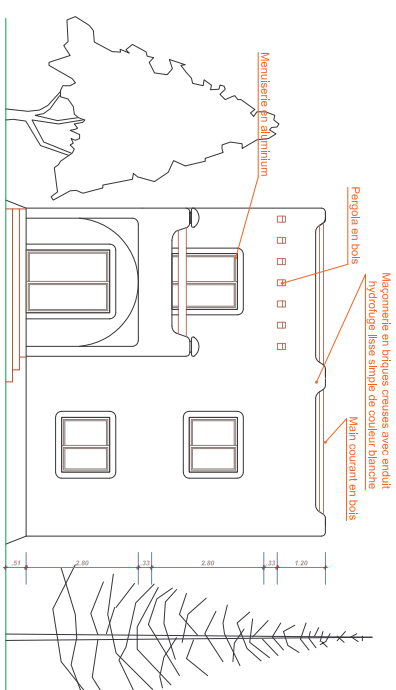
ETAGE
Surface totale couverte : 70,40 m²



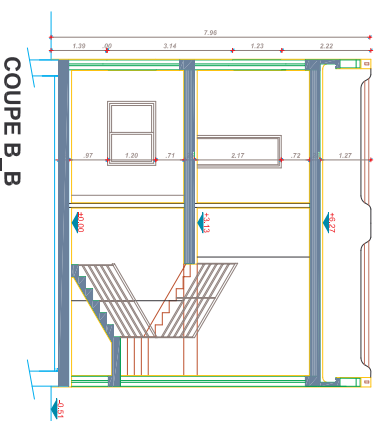
TERRASSE



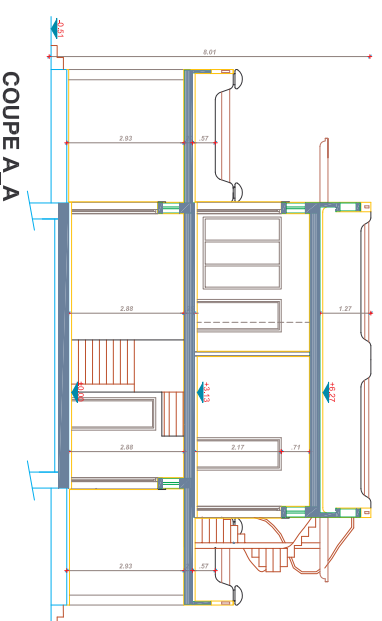
FAÇADE PRINCIPALE



FAÇADE ARRIERE



COUPE B_B



COUPE A_A

